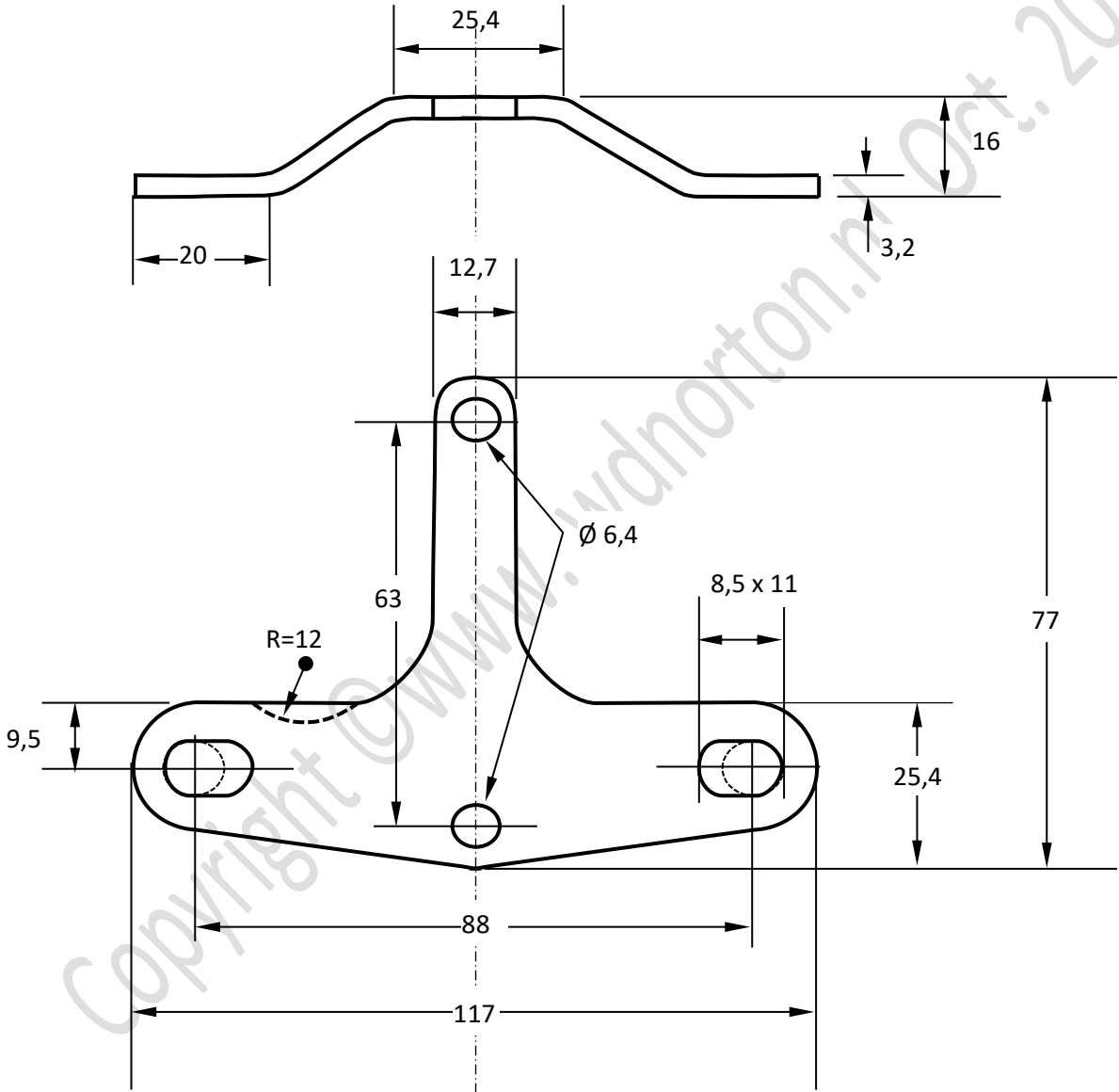
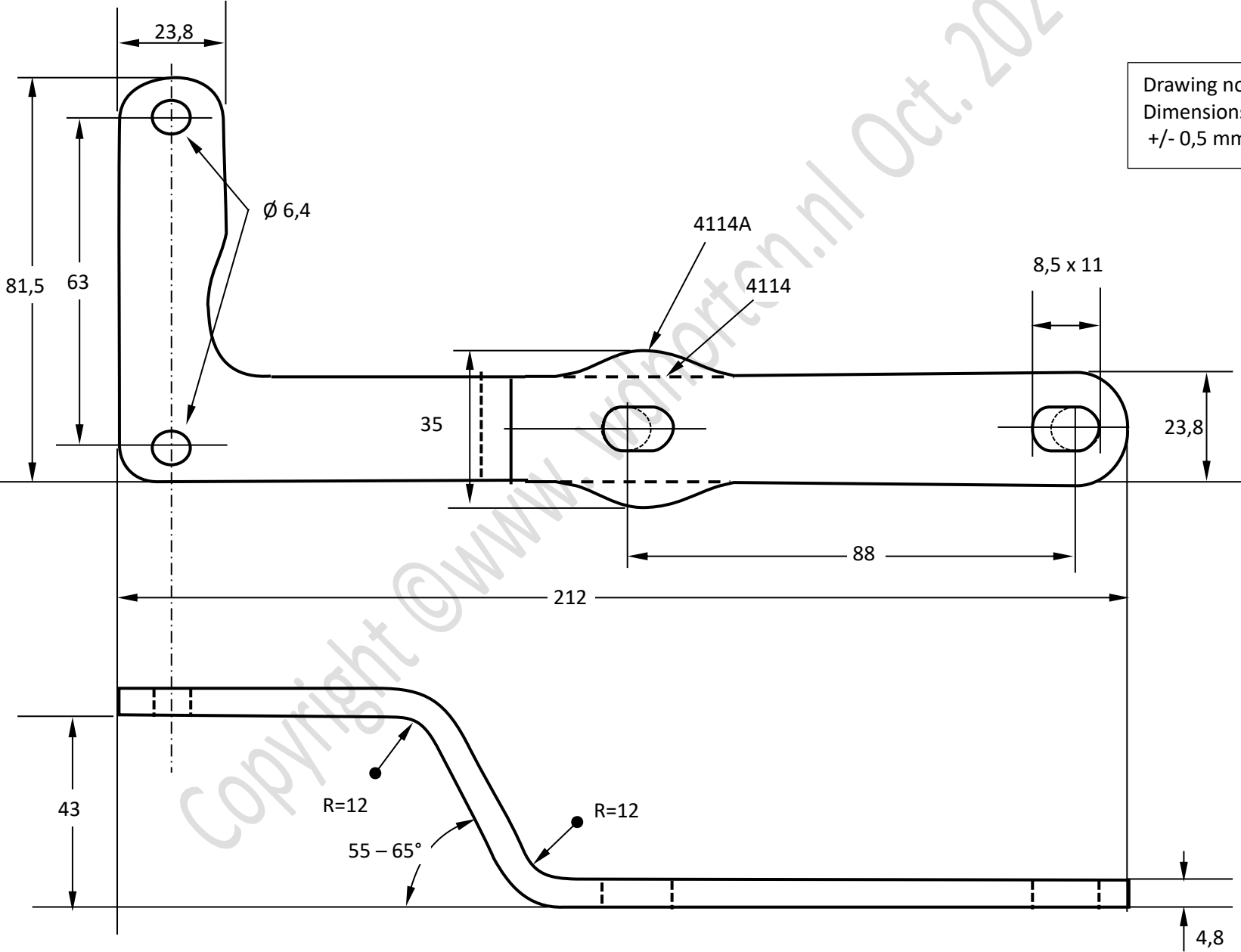


Speedometer bracket as applied to civilian and military Nortons from 1936 to 1940 pn 3884
Recess to accommodate speedo lighting fitting (R=12) introduced in 1939, part number unchanged.



Drawing not to scale
Dimensions in mm,
+/- 0,5 mm

Speedometer bracket as introduced in 1940 (C7353) and used upto 1945. pn 4114 replaced by modified 4114A (C14498 upwards in parts list but likely introduced earlier)



Drawing not to scale
Dimensions in mm,
+/- 0,5 mm